

# Cue Sheet

Guides for  
Teachers

## Banana Slug String Band

Thursday • October 3, 2024

### Questions to ask students **BEFORE** the performance

- What does the word “environment” mean?
- What roles do we play in the environment?
- What actions do you or your family members do that are good for the environment?

### Questions to ask students **AFTER** the performance

- What did you learn about our planet that you didn’t know before?
- Share a line from the song you remember the most. Why do you think you remember it?
- If you were to write a song about the planet, what would you write about?



## About the Performance

For over 30 years, the Banana Slug String Band has written and performed upbeat educational music led by Doug Dirt, Airy Larry, Marine Mark, and Solar Steve. The band’s award-winning environmental science songs are sung in classrooms around the world, inspiring students to learn about their planet and consider how our actions affect the Earth.

At their live shows, the Banana Slugs introduce original characters such as Doug the Drop, Peter the Penguin, Mr. Dirt the Puppet, Louie the Crab, and Big Red (a talking Redwood Tree). Some characters are performed by the singers wearing full-body costumes, while others are brought on stage as puppets.

The Banana Slug’s original music ranges from folk and blues to reggae, rock and roll, and rap in style. Their catchy tunes are crafted to stick in the minds of students. This performance, entitled “Hug the Earth,” features a mix of songs from their popular shows.



Proudly sponsored  
by Rich & Michelle Dowdican

# Vocabulary

**Banana Slug** (*buh-nan-uh-sluhg*) - a large yellow slug found in the Pacific Northwest of the United States of America.

**catchy** (*kach-ee*) - instantly appealing and memorable

**dirt** (*durt*) - earth or soil

**diversity** (*dye-ver-si-tee*) - variety

**environment** (*en-vi-urn-ment*) - the natural world around us and all living things

**habitat** (*hab-eh-tat*) - the natural home of a living thing

**marine** (*muh-reen*) - related to the sea; marine mammals live in the sea for example

**pollution** - harmful things that have been introduced into the environment; pollution can be visible or invisible

**recycle** (*ree-sike-kuhl*) - to convert waste into reusable material

**reduce** (*ruh-dooos*) - to use less of something to cut back on waste

**reuse** (*ri-yoooz*) - to use something again before it becomes waste

**solar** (*sew-ler*) - related to the Sun; dependent on or using the Sun's energy

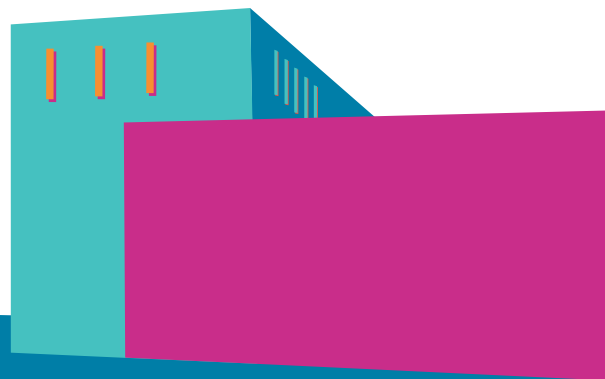
**watershed** (*wah-ter-shed*) - an area of land that drains into the same body of water; the Rio Grande Basin for example

# Theater Etiquette

- Stay with your chaperone at all times.
- Remove hats or caps when inside.
- Put away mobile phones and other electronic devices. Use of photographic, video recording, audio recording, phones, and gaming devices is prohibited during performances.
- Allow everyone to enjoy the performance by remaining quiet, except when a response is requested by performers. Some shows are interactive, while others are not.
- Stay seated and do not kick or hit the seat in front of you.
- Request to leave the hall with an adult chaperone if you need to use the restroom or cool down. If you are being disruptive, an adult chaperone may escort you out of the theater. You may view the show on screens in the lobby or lower lounge until you are ready to return with your chaperone.
- Clap after the end of a song during a musical or other music performance. During a ballet or dance performance, clap at the end of the number.
- Remain in your seats after the applause at the end of the show until our House Manager dismisses you.

## Click here!

Visit the Banana Slug String Band's website for more educational resources, including a sampling of their songs.



# Facts about Popejoy Hall

- Popejoy Hall officially opened on October 1, 1966.
- The hall can seat up to 1985 people.
- Most walls inside the hall are not parallel or perpendicular to the stage. Curves, angles, and soft or textured surfaces scatter the sound throughout the hall so that audiences can hear performances better.
- Popejoy Hall has an orchestra pit which raises and lowers. It is the largest elevator in the building.
- The ceiling over the stage is three times the height of the curtain opening. Sets can be lowered into place by pulleys and raised high enough to be stored completely out of sight when not in use.